



# RETRO PLATE<sup>®</sup>



UNIVERSITY OF LETHBRIDGE  
LETHBRIDGE, AB, CANADA  
by CONCRETE REFLECTIONS, INC.



**The Best Polished Concrete Floors**  
Use the RetroPlate Concrete Polishing System!

THE ORIGINAL  
**CONCRETE POLISHING**  
SYSTEM SINCE

**1999**

**PIONEERS OF THE CONCRETE POLISHING INDUSTRY**

RetroPlate is a chemically reactive liquid which **enhances concrete density and hardness**, allowing concrete surfaces to be **polished** to a high, marble-like sheen. In conjunction with diamond tools and machinery, and the process of grinding and polishing concrete, it is known as the RetroPlate Concrete Polishing System.



Join our RetroPlate *Elite* Applicator Network!

**APPLY TODAY!**

[www.curecrete.com/elite](http://www.curecrete.com/elite)

**HARDENED**  
**DUSTPROOF**  
**POLISHED**  
EASY TO CLEAN  
HIGH TRACTION



MAIN STREET STATION  
RICHMOND, VA, USA  
by CONCRETE

**MORE + 30%** INCREASED  
**LIGHT REFLECTIVITY**

**UP TO 400%** INCREASED  
**ABRASION RESISTANCE**

**UP TO 21%** INCREASED  
**IMPACT STRENGTH**



SPRINGBANK HANGAR  
CALGARY, AB, CANADA  
by CONCRETE REFLECTIONS

BOISE STATE STUDENT UNION  
BOISE, IDAHO, USA  
by THE CONCRETE CURE



**REDUCED**  
**LIFE CYCLE**  
**COST**

NEW OR EXISTING CONCRETE  
NO RE-APPLICATION  
EASE OF MAINTENANCE  
LONG TERM PERFORMANCE  
TRULY SUSTAINABLE SYSTEM

# 1 GRIND

Grind the floor with industrial strength diamonds to remove imperfections such as trowel marks or scratches, and expose bare concrete by removing existing coatings or mastics. Grinding can be light to heavy depending on the desired level of exposed aggregate.



\*Classifications according to Concrete Polishing Council's (CPC) Polished Concrete Aggregate Exposure Chart.



# 2 COLOR

Add style and personality to your polished concrete floors with an array of color options. Achieve any look and style with full color floors, custom logos or unique patterns.

Color options for polished concrete include: **integral color**, **dry shake** and **topical dyes and stains**.



# 3 DENSIFY

RetroPlate penetrates the concrete and chemically reacts to harden and densify the floor by filling pores and creating a denser surface. Many densifiers on the market claim to work for polished concrete, but RetroPlate has been specifically formulated to allow the concrete surface to be polished to a marble-like sheen.

\*A simple scratch test with a metal object demonstrates the softness of non-densified concrete and the hardness of densified concrete.

\*\*Microscopic view: porous structure of non-densified concrete surface and filled-in pores of densified concrete surface.



# 4 POLISH

Polish the floor with progressively finer diamond grits to achieve the level of shine and reflection desired. Polished concrete floors can be polished from a flat, matte appearance, to a highly polished, glossy finish.

\*DOI - Distinctness-of-Image. The DOI, Image Clarity Value, range from 0 to 100 with a value of 100 representing perfect DOI (image clarity).

\*\*Classifications according to Concrete Polishing Council's (CPC) Polished Concrete Appearance Chart.



# ONE COMPLETE SYSTEM



See how our "One Complete System" of concrete floor products works together to enhance the performance of your concrete floors.

ONE COMPLETE SYSTEM FOR ALL YOUR DENSIFIED AND DENSIFIED-POLISHED CONCRETE FLOORING NEEDS



## PREPARE

Remove existing floor coverings and/or coatings chemically or by grinding the concrete surface until all residue has been adequately removed.

GRINDING ACCELERANT:

**KICK START**

CHEMICAL STRIPPER:

**CRETE STRIP**



## STYLE & DESIGN

Unlock your concrete floor's unlimited design potential through diamond grinding and honing, and colorful dyes.

GRINDING, HONING & COLOR:

**DIAMONDS & RETRO DYE**

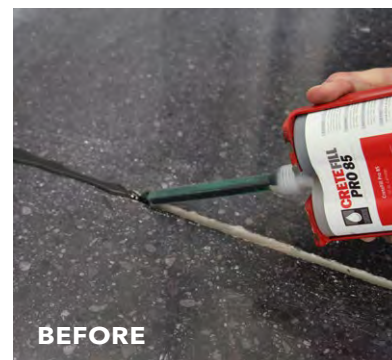


## FILL & REPAIR

Properly filling and repairing concrete joints, cracks, and spalls, increases the aesthetic appeal of your densified-polished concrete floor, and ensures optimum floor performance for the life of your floor. Multiple colors are available.

JOINT, CRACK & SPALL REPAIR SYSTEM:

**CRETEFILL PRO SERIES**



## PROTECT

Densified-polished concrete is durable and beautiful, but in certain circumstances may require added protection. Topical stain repellents and guard products specifically formulated for densified-polished concrete floors may be used, but will require periodic re-application.

STAIN REPELLENT & GUARD:

**RETRO GUARD**

**RETRO PEL**

**RETRO SHIELD**

## CLEAN + MAINTAIN

The durability and longevity of densified-polished concrete is unmatched by other flooring products. However, adequate and proper maintenance is key to optimal floor performance. Concrete requires minimal maintenance, and with the proper tools, is very easy to do.

CONCRETE CLEANERS:

**CRETE CLEAN**  
WITH SCAR GUARD

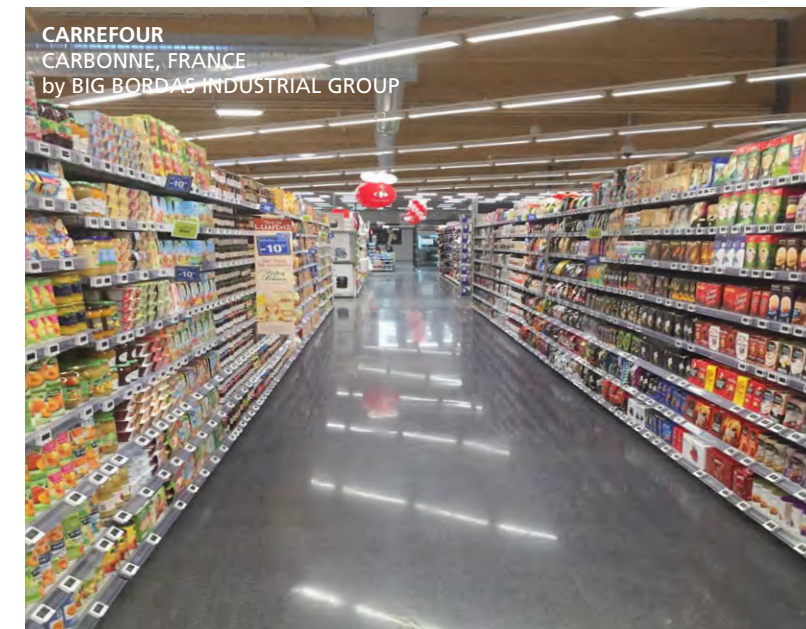
**CRETE CLEAN**  
WITH SCAR GUARD  
SINGLE DOSE



Nonfood Compounds Program Listed - A4 Registration #155552

CreteClean Plus is safe for your floors, and your employees and customers!

Product availability varies by market. Contact your local representative.



## THE REACH AT THE KENNEDY CENTER

Polished Concrete Awards Project of the Year | Concrete Surfaces Magazine, January 2020



### LOCATION

Washington, DC, USA

### APPLICATOR

Cuviello Concrete

### AREA

14,000 ft<sup>2</sup>

Cuviello Concrete's expert craftsmanship, paired with the RetroPlate System, produced a high-end, polished concrete floor with a 20 year life cycle.

They perfectly color matched, detail filled and patched slab edges and glass door floor hinges, installed zinc strips in 167 stair nosings and stenciled aggregate where needed to provide a perfectly consistent, exposed aggregate appearance.

When a quality product like RetroPlate meets quality applicators, the results are undeniably remarkable.

## PRODUCT, LABOR & PERFORMANCE WARRANTY

RetroPlate floors receive a 10-Year Product, Labor and Performance Warranty (the only one in the industry) which can be extended to a Lifetime Warranty when maintained with CreteClean Plus with Scar Guard™.



Everlast Industrial Flooring, LLC faced several challenges when they were awarded this project for the Hildene Capital Management Offices in Stamford, CT.

The 30 year old floor had cracks and holes which needed to be filled and a 1/2-inch thick underlayment which required removal, not to mention tile which they discovered beneath it.

After a lot of patience, care and attention to detail, the Everlast crew delivered a flawless polished concrete floor!

### LOCATION

Stamford, Connecticut, USA

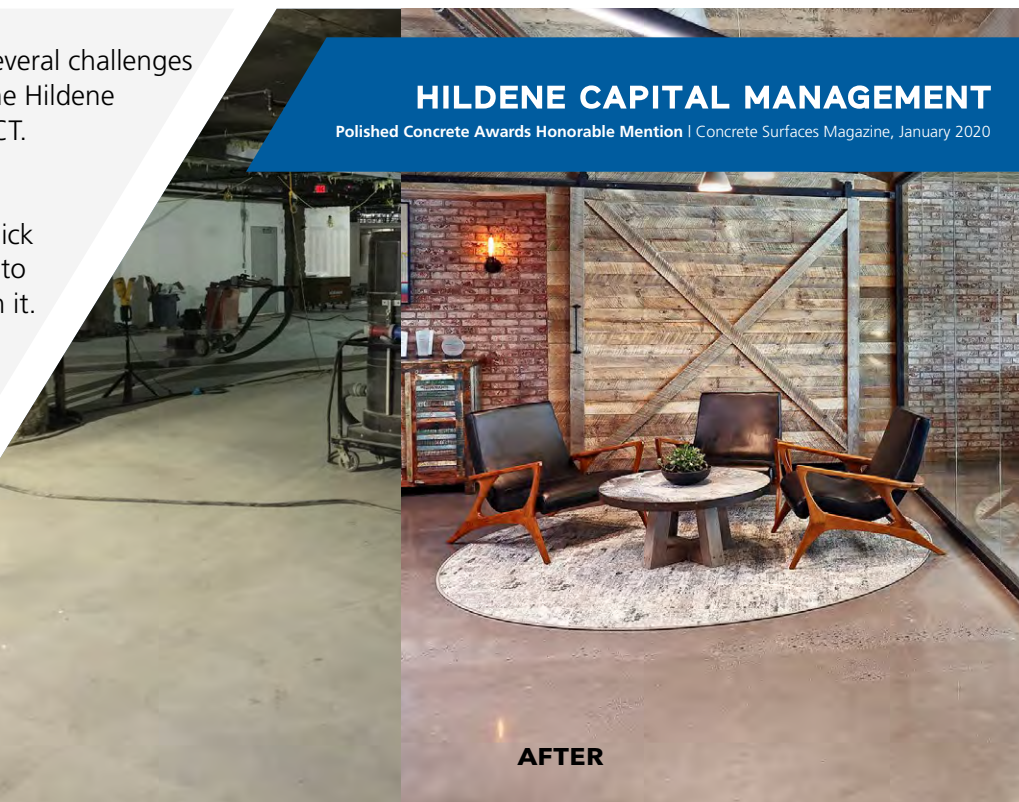
### APPLICATOR

Everlast Industrial Flooring LLC

### AREA

7,500 ft<sup>2</sup>

BEFORE



AFTER

## HILDENE CAPITAL MANAGEMENT

Polished Concrete Awards Honorable Mention | Concrete Surfaces Magazine, January 2020

### LOCATION

Washington, DC, USA

### APPLICATOR

Cuviello Concrete

### AREA

14,000 ft<sup>2</sup>

Cuviello Concrete's expert craftsmanship, paired with the RetroPlate System, produced a high-end, polished concrete floor with a 20 year life cycle.

They perfectly color matched, detail filled and patched slab edges and glass door floor hinges, installed zinc strips in 167 stair nosings and stenciled aggregate where needed to provide a perfectly consistent, exposed aggregate appearance.

When a quality product like RetroPlate meets quality applicators, the results are undeniably remarkable.



The RetroPlate System contributes to LEED Points and has been used in many facilities earning LEED Platinum, Gold, Silver and Certified status.

\*Photos from top to bottom:

### LEED PLATINUM

Autodesk  
San Francisco, CA

### LEED GOLD

Washington Station/Obrien & Gere Headquarters  
Syracuse, NY

### LEED SILVER

Cascadia Community College  
Bothell, WA

### LEED CERTIFIED

Syracuse University - Carmelo K. Anthony Basketball Center  
Syracuse, NY

\*The above list is a small sampling of the numerous LEED projects that have utilized the RetroPlate System. For a more extensive list, contact Curecrete or visit [www.retroplate.com](http://www.retroplate.com).

## TRANSPARENCY MATTERS

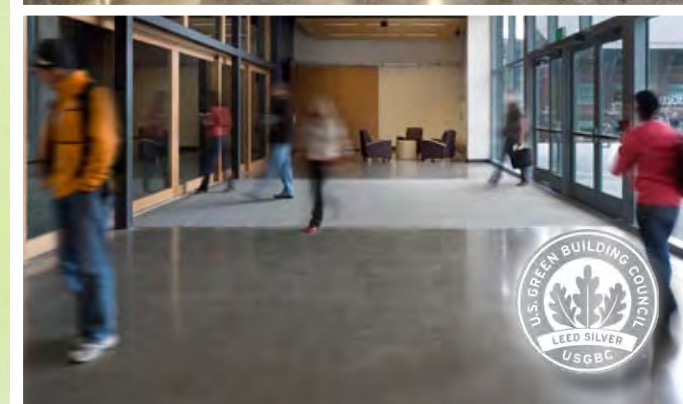
HPD v1.0

Health Product Declaration



HPD v2.1

Health Product Declaration





GREEN AND

# SUSTAINABLE

## CASE STUDY: VOLKSWAGEN CANADA



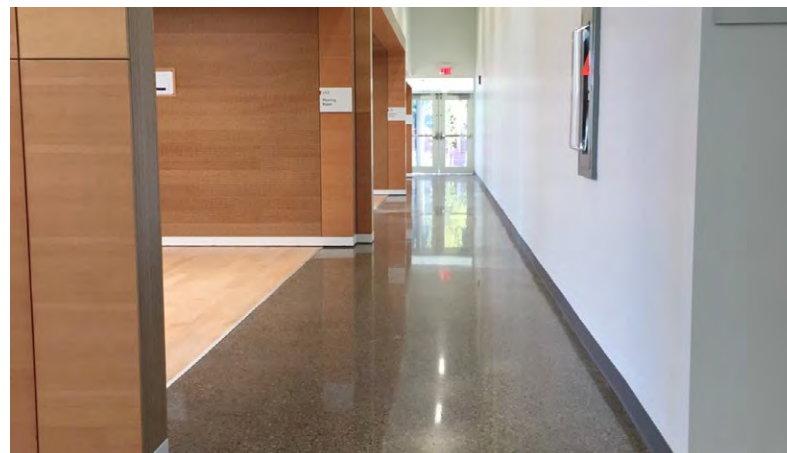
### CONTRIBUTES TO LEED

The California Academy of Sciences in San Francisco is one of the world's greenest museums, earning 2 LEED Platinum awards and making it the world's first "Double Platinum" museum.



CALIFORNIA ACADEMY OF SCIENCES  
SAN FRANCISCO, CA, USA  
by DIACON

See our LEED point contributor document online!



### NO VOCs

RetroPlate contains no Volatile Organic Compounds - 0 g/L (VOC-free) and contains no solvents. It also eliminates the need for floor adhesives.



UNIVERSITY OF CALGARY - TAYLOR INSTITUTE  
CALGARY, AB, CANADA  
by CONCRETE REFLECTIONS

See our independent VOC emission test certificate online!



### ENHANCED NATURAL LIGHTING

Indoor spaces with highly reflective floors, such as densified-polished concrete, increase daylight reflectivity. Natural light (daylighting) has been touted not only for its aesthetics, but also its productivity and comfort benefits.

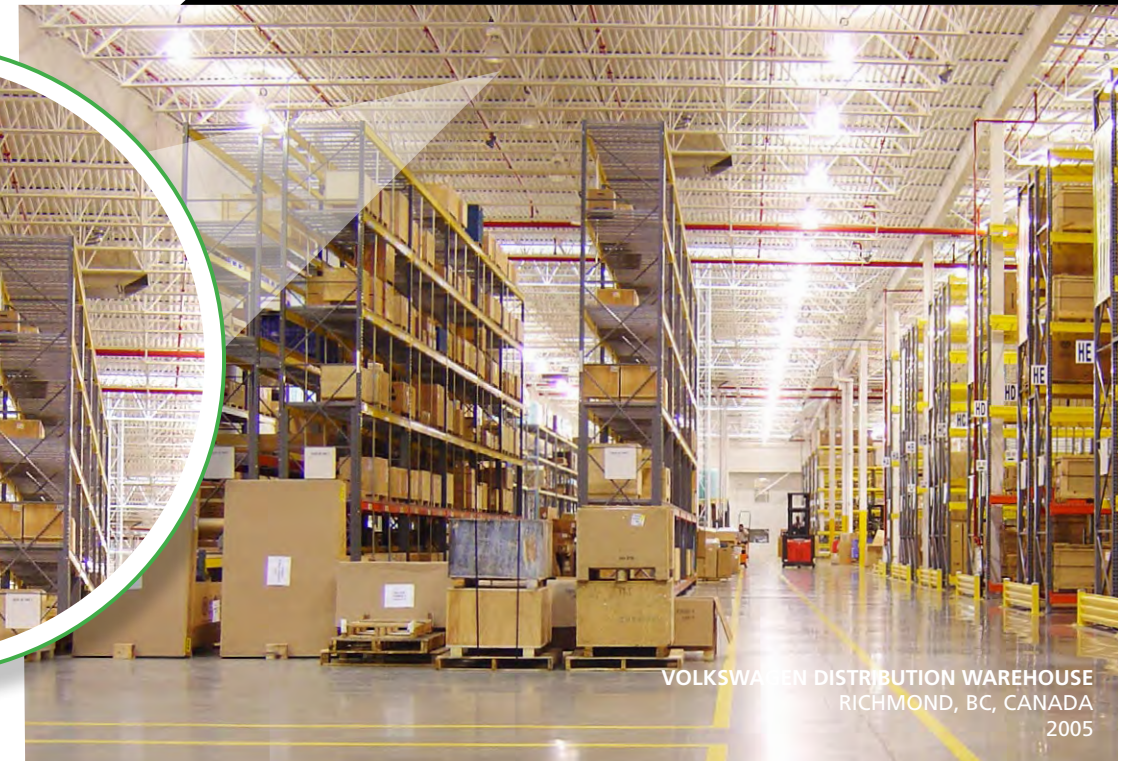
CURECRETE HEADQUARTERS  
SPRINGVILLE, UT, USA  
by BRAK CARMAN



### RE-USE EXISTING CONCRETE | Sustainability

Existing concrete floors previously covered in coatings or material coverings can be rejuvenated and given new life by converting them into densified-polished concrete floors with limitless design potential and a one-time, permanent application that never requires re-application.

COBORN'S  
ST. JOSEPH, MN, USA  
by GOPHER STATE CLEANING



VOLKSWAGEN DISTRIBUTION WAREHOUSE  
RICHMOND, BC, CANADA  
2005

### 1/3 OF THIS VOLKSWAGEN FACILITY'S LIGHTS HAVE BEEN PERMANENTLY TURNED OFF

"The RetroPlate System has met and exceeded all of our needs and expectations. The application has decreased our maintenance requirements as well as our utility costs. Thanks to the light reflective properties of the RetroPlate System we were able to turn off 1/3 of our overhead lights, cutting our bottom line significantly. The air is free of dust and debris allowing my colleagues and I to work in a safe and healthy environment."

Tim Ryan, Facility Engineer  
Volkswagen Canada, Inc.

### LIFE CYCLE COST COMPARISON

PRODUCT	INSTALLED COST	ANNUAL MAINTENANCE	EXPECTED LIFE	10 YEARS EXPENSE
RetroPlate	\$2 - \$4	\$0.25	10+ yrs.	\$4.50 - \$6.50
RetroPlate w/ Dyes	\$2.50 - \$6	\$0.25	10+ yrs.	\$5.00 - \$8.50
Acrylic	\$0.20	\$0.50	6 - 12 mos.	\$5.10 (min.)
Urethane	\$0.75 - \$2	\$1.50	2 - 9 yrs.	\$16 - \$17
VCT	\$1.50 - \$4	\$1.50	10+ yrs.	\$16 - \$20
Epoxy	\$1.50 - \$5	\$1.50	1 - 5 yrs.	\$16 - \$20
Carpet	\$2.50+	\$1.50	5 - 10 yrs.	\$17 - \$20
Vinyl	\$3 - \$5	\$1.50	9 yrs.	\$18 - \$25
Terrazzo (epoxy)	\$13	\$0.50	10+ yrs.	\$18
Ceramic Tile	\$7 - \$8	\$1.50	10+ yrs.	\$22 - \$23
Terrazzo (cement)	\$12	\$0.70	10+ yrs.	\$19

\*All prices are square-foot costs and use the initial installed cost, annual maintenance cost and life of the product to determine the Total Expense for 10 years. Information, other than for RetroPlate, is from NTMA, Concrete Construction and other independent sources. These are national pricing averages. Prices may vary depending on region.



JM TAWES TECH SCHOOL // Westover, MD, USA  
by Master Applications

SAM'S CLUB // Daytona, FL, USA  
by American Concrete Coatings

LINCOLN PARK ZOO WELCOME CENTER // Chicago, IL, USA  
by Artlow Systems

TAC AIR // Provo, UT, USA  
by CDC Restoration and Construction

# PROJECT HIGHLIGHTS

ONLINE PHOTOBOOK  
More amazing project photos at your fingertips!



ST. STANISLAUS KOSTKA CHURCH // Pittsburgh, PA, USA  
by Surface Technologies, Inc.

PRIVATE OFFICE BUILDING // Brunei  
by BUE Enterprise

ALOFT HOTEL // San Jose, COSTA RICA  
by Aditec

BUNNINGS HARDWARE - CAFE // Keysborough, AUSTRALIA  
Managed through RetroPlate Australia

## ELMWOOD PARK HIGH SCHOOL EXPANSION AND RENOVATION

Elmwood Park, IL, USA // Applicator: Artlow Systems

**DLA Architects, Ltd.** specified RetroPlate for this high school's expansion and renovation project. Longtime RetroPlate applicator **Artlow Systems** polished the concrete floors and installed decorative saw cuts differentiated with black and gold dyes, an homage to the high school's colors.

This project is a fine example of how a RetroPlate floor can be a durable, beautiful and "green," having no negative impact on the environment and providing a healthy space for the building's occupants.

In September 2018, three years after installation, Curecrete representatives visited the project and spoke with school officials who expressed their satisfaction with the floor's ease of maintenance and reported no issues with durability of this high traffic floor.

*This project was the feature cover story in the July-August 2016 issue of Design Cost Magazine. DLA Architects was the 2015 Award of Distinction winner in the annual Invitation Exhibition of Educational Environments for their design of this project.*



## PROVIDENCE ST. PETER HOSPITAL

Olympia, WA, USA // Applicator: Peter Wagner

The concrete floors of Providence St. Peter Hospital in Olympia, Washington was acid stained and then polished with RetroPlate in 2002-2003.

Twelve years later, the polished concrete floor is as beautiful as it was at the time of application and with no additional topical protection. This floor is a prime example of a properly densified-polished floor's durability, longevity and protection - even to the point of preserving the acid stained colors.

RetroPlate polished concrete works well in both schools and healthcare facilities because it does not support the growth of mildew, allergens or dust mites, and is a dust-free surface.

*Photos courtesy of Peter Wagner.*



## CARE AND

# MAINTENANCE

### MAINTENANCE PROGRAM

An effective maintenance program that includes routine scrubbing with soft to medium maintenance pads, ample down pressure and proper amounts of water and cleaner will enhance the floor's performance significantly.

**Scrub Floor OFTEN:** Minimum routine cleaning 2 - 3 times per week with *CreteClean Plus with Scar Guard* provides superior results.

**Clean Spills QUICKLY:** Corrosive, oily, or aggressively staining contaminants should be removed quickly to avoid possible staining.

### RECOMMENDED SUPPLIES

- > **Mop & Bucket**
- > **Automatic Scrubber**  
Capable of 125 - 150 lbs. of downward pressure.
- > **Soft to Medium Maintenance Pads or Nylon Brushes**
- > **Cleaner: *CreteClean Plus with Scar Guard***<sup>™</sup>  
Performance enhancing cleaner specifically designed to clean densified and densified-polished concrete floors. Regular use helps decrease the visibility of minor scratches and blemishes and helps maintain the concrete sheen.
- > **Oil Emulsifier & Acrylic Stripper: *CreteStrip***<sup>™</sup>  
Use directly on stain for spot treatment.

### CONDITIONS TO AVOID

- > Standing liquids of any kind
- > Cleaners containing hydroxides or sulfates
- > Acidic or caustic cleaners; acidic cleaners will etch the surface over time and dull the floor's finish
- > All contact with any acids
- > Treated dust mops or sweeping compounds
- > Bleach or any acidic/harsh chemicals
- > Aggressive scrubbing brushes; Strata Grit, Nylo-Grit and other aggressive scrubbing brushes will alter the polished pattern and leave a dull appearance.

### RECOMMENDED PRODUCTS

#### CLEANERS:

**CRETE CLEAN PLUS**  
WITH SCAR GUARD<sup>™</sup>

**CRETE CLEAN PLUS**  
WITH SCAR GUARD<sup>™</sup> SINGLE DOSE

- 1 gal. (3.79 L) jugs
- 5 gal. (19 L) pails
- 55 gal. (208 L) drums
- 1.2 oz. pac for mop and bucket
- 6 oz. pouch auto scrubber (10-19 gal)
- 12 oz. bottle for auto scrubber (20-30 gal)

#### OIL EMULSIFIER, & ACRYLIC STRIPPER:

**CRETE STRIP**<sup>™</sup>

- 5 gal. (19 L) pails
- 55 gal. (208 L) drums

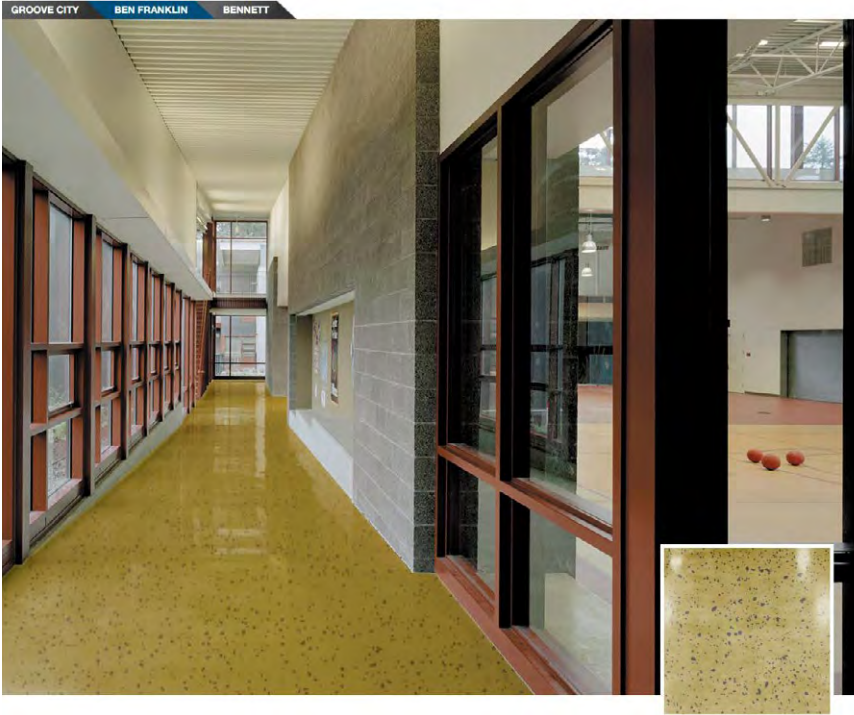


[www.curecrete.com/shop](http://www.curecrete.com/shop)





## DON'T JUST IMAGINE THE POSSIBILITIES... DESIGN THEM ONLINE



### UNLOCK YOUR FLOOR'S UNLIMITED DESIGN POTENTIAL

RetroPlate's innovative **DESIGN CENTER** allows you to visualize your polished concrete flooring options against 3 separate backgrounds. Scan the code or visit the link below to explore the endless possibilities!



[www.retroplatesystem.com/design-your-floor](http://www.retroplatesystem.com/design-your-floor)

- 1 SELECT **BACKGROUND**
- 2 SELECT **DYE COLOR**
- 3 SELECT **AGGREGATE LEVEL**
- 4 SELECT **SHEEN**

### TECHNICAL INFORMATION QUICK LINKS

**SPEC  
O3660 (PDF)**  
*Editable format  
on website*



**HPD v2.1**  
*Health Product  
Declaration*



**SDS**  
*Safety Data  
Sheet*



**TEST 1**  
*General  
Testing*



**TEST 2**  
*Co-Efficient  
of Friction*



**TEST 3**  
*Abrasion &  
Impact  
Strength*



### CERTIFICATIONS & RECOGNITIONS

- ▶ TÜV SÜD TM 14 Tested and Certified
- ▶ Zero (0) VOCs
- ▶ CE Declaration of Conformity
- ▶ REACH Certified
- ▶ NFSI Certified "High-Traction"
- ▶ Approved for use in food handling facilities



## CURECRETE

**CONTACT** ▶ 1203 Spring Creek Place  
Springville, UT 84663, USA  
  
(801) 812-3420  
(888) 942-3144  
  
[www.retroplate.com](http://www.retroplate.com)  
[www.curecrete.com](http://www.curecrete.com)

**TECHNICAL INFO** ▶ [info@retroplatesystem.com](mailto:info@retroplatesystem.com)

**CUSTOMER CARE** ▶ [customercare@curecrete.com](mailto:customercare@curecrete.com)

**HOW TO BUY** ▶ *RetroPlate is sold through a network of manufacturer representatives and international distributors. To locate your representative or distributor, please contact us.*